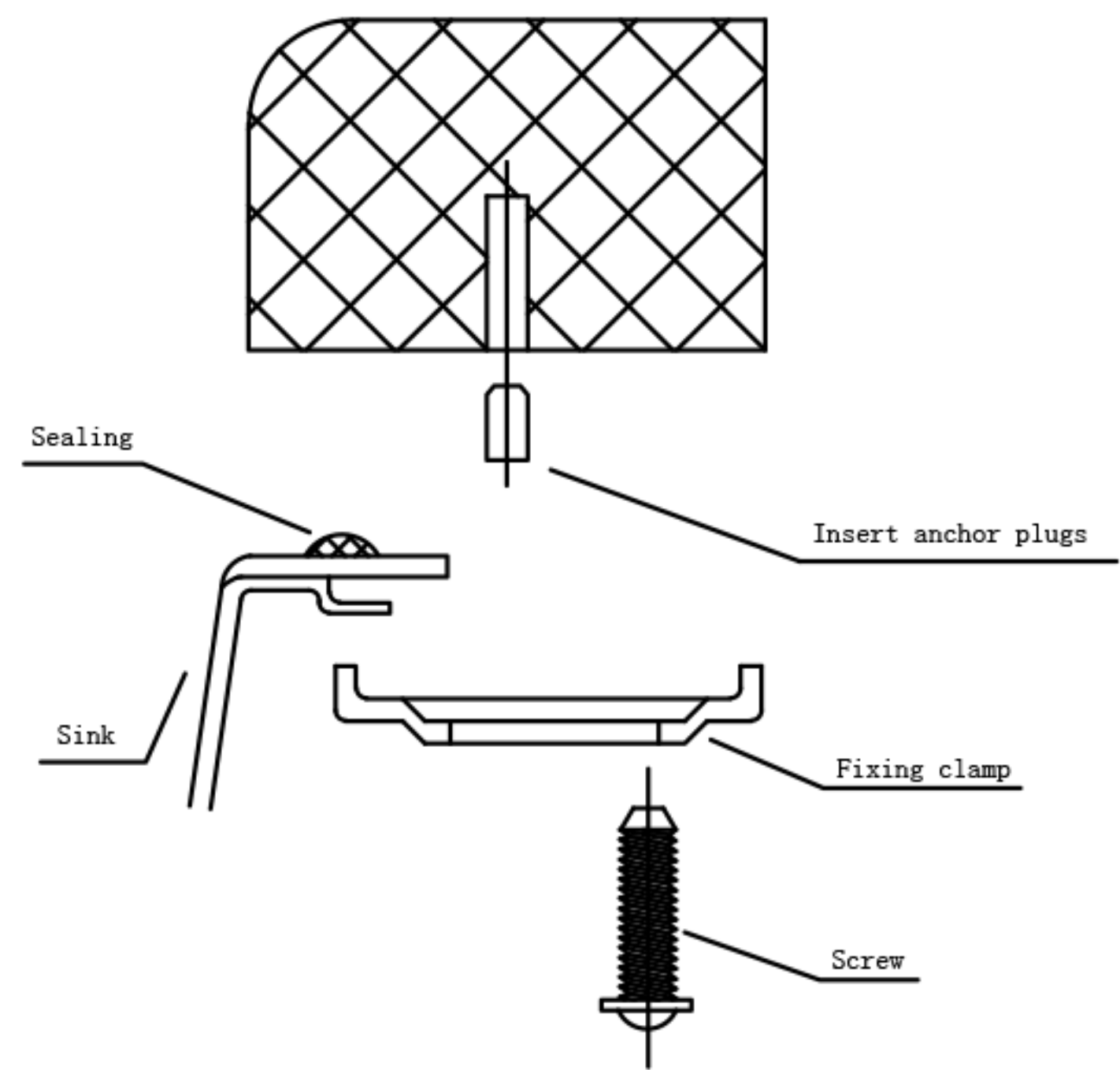
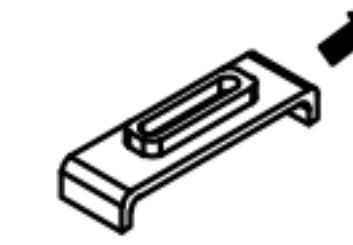


BOSCO®

MODEL:201830、221830



28"



UNDERMOUNT INSTALLATION INSTRUCTION

This sink is specifically designed to be under-mounted in a solid surface countertop only.

CAUTION: Sink edge may be sharp; handle with caution. Do not install a damaged sink-inspect carefully.

1. Cut out countertop using this template.
2. Determine placement of clip brackets as indicated by template. Pre-drill holes according to method desired based on countertop material.
3. Apply a bead of Silicon evenly along edge on underside of cuntertop.
4. Position and align sink over opening. Press sink onto Silicon seal.
5. After re-checking aliigment,tighten clip brackets against sink edge.
6. Remove excess Silicon.

NOTE :THIS TEMPLATE IS ONLY A GUIDE. ACTUAL SINK SHOULD BE PRESENT TO ENSURE PERFECT CUT OUT.

HINT:After Silicon cures, wipe inside edge with dentured alcohol. This will smooth out any rough areas.

16"

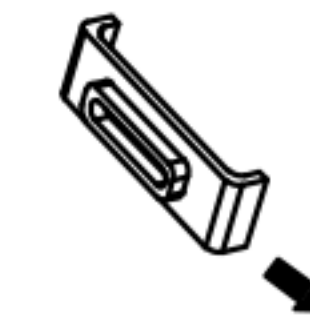
17/16"



CUT LINE FOR FLUSH OPENING(CUTTING BOARD AND ROLLING GRID ON COUNTER TOP)

CUT LINE FOR REVEAL OPENING(CUTTING BOARD AND ROLLING GRID SIT FLUSH WITH TOP OF COUNTER)

28"



R10