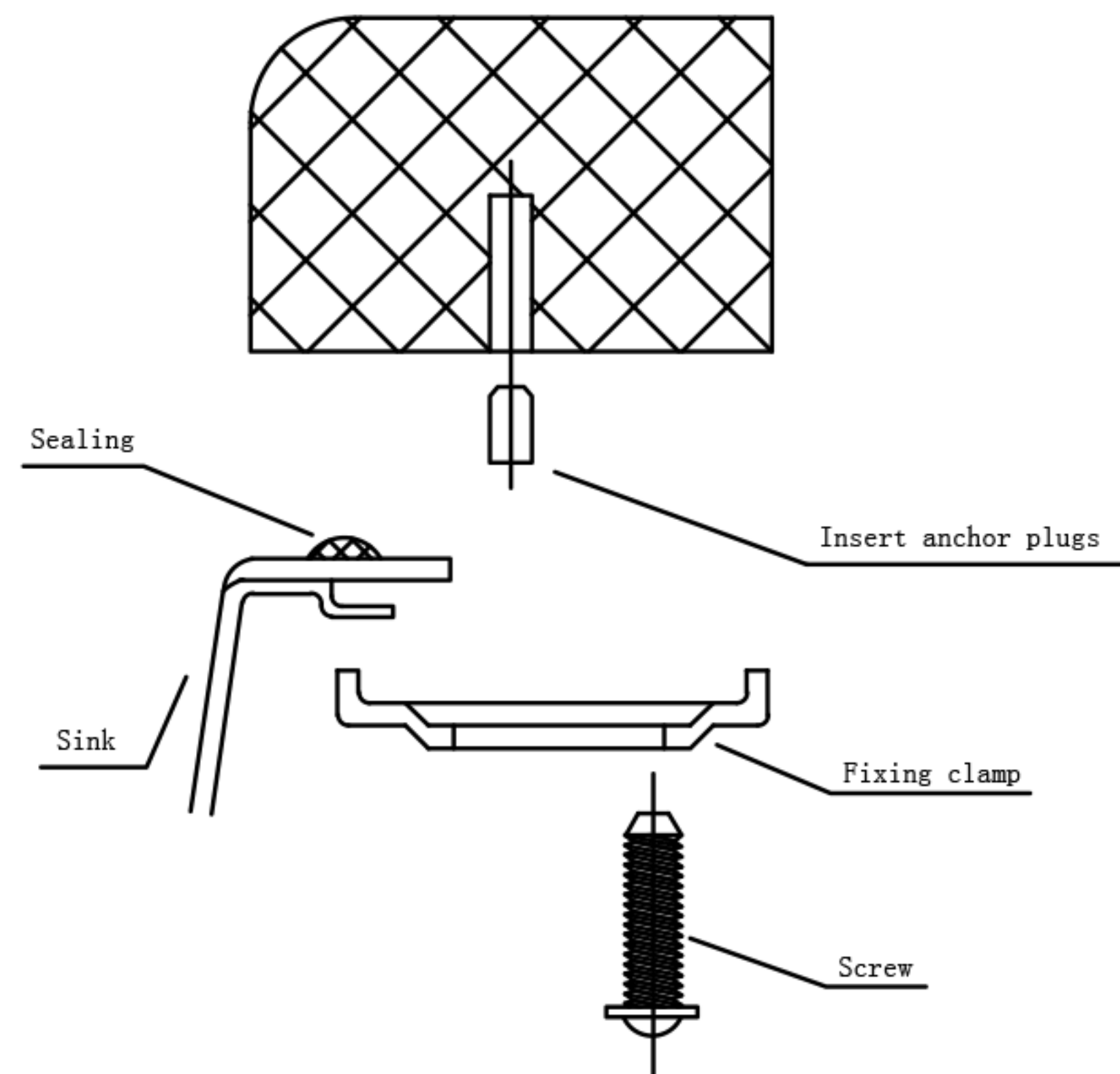


# BOSCO®

## MODEL:201833



31"



31"



### UNDERMOUNT INSTALLATION INSTRUCTION

This sink is specifically designed to be under-mounted in a solid surface countertop only.

CAUTION: Sink edge may be sharp; handle with caution. Do not install a damaged sink-inspect carefully.

1. Cut out countertop using this template.
2. Determine placement of clip brackets as indicated by template. Pre-drill holes according to method desired based on countertop material.
3. Apply a bead of Silicon evenly along edge on underside of cuntertop.
4. Position and align sink over opening. Press sink onto Silicon seal.
5. After re-checking aliignment,tighten clip brackets against sink edge.
6. Remove excess Silicon.

NOTE :THIS TEMPLATE IS ONLY A GUIDE. ACTUAL SINK SHOULD BE PRESENT TO ENSURE PERFECT CUT OUT.

HINT:After Silicon cures, wipe inside edge with dentured alcohol. This will smooth out any rough areas.

CUT LINE FOR FLUSH OPENING(CUTTING BOARD AND ROLLING GRID ON COUNTER TOP

CUT LINE FOR REVEAL OPENING(CUTTING BOARD AND ROLLING GRID SIT FLUSH WITH TOP OF COUNTER)

16"

17/16"

R10